



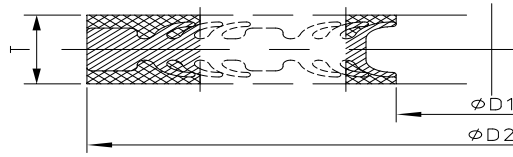
Fishbone Gaskets Size and Torque

Catalog

JIS Series.....	22
TYPE I (Basic Construction) for TG (Tongue and Groove) Flanges.....	2
TYPE I (Basic Construction) for MFM (Male-Female) Flanges.....	5
TYPE II (With Centering Ring Construction) for FF (Flat Face) & RF (Raised Face) Flanges.....	8
Applicable standards.....	13



JIS Series



TYPE I (Basic Construction) for TG (Tongue and Groove) Flanges

A	D1 (mm)	D2 (mm)	5K			10K			16K		
			Minimum Torque (N.m)	Maximum Torque (N.m)	Preferred Torque (N.m)	Minimum Torque (N.m)	Maximum Torque (N.m)	Preferred Torque (N.m)	Minimum Torque (N.m)	Maximum Torque (N.m)	Preferred Torque (N.m)
10	28	38	6.5	42.5	19.9	7.8	74.4	34.9	7.8	74.4	34.9
15	32	42	7.3	42.5	21.8	8.7	74.4	34.9	8.7	74.4	34.9
20	38	50	10.4	42.5	31.0	12.4	74.4	37.3	12.4	74.4	37.3
25	45	60	15.5	42.5	39.8	24.7	188.7	88.5	24.7	188.7	88.5
32	55	70	22.1	74.4	66.1	29.5	188.7	88.5	29.5	188.7	88.5
40	60	75	23.9	74.4	69.8	31.8	188.7	95.1	31.8	188.7	95.1
50	70	90	37.7	74.4	69.8	50.3	188.7	150.2	25.1	188.7	88.5
65	90	110	47.1	74.4	69.8	62.8	188.7	176.9	31.4	188.7	93.7
80	100	120	69.1	188.7	176.9	34.6	188.7	103.0	43.2	368.6	172.8
90	110	130	75.4	188.7	176.9	37.7	188.7	112.2	47.1	368.6	172.8
100	125	145	42.4	188.7	126.2	42.4	188.7	126.2	53.0	368.6	172.8
125	150	175	63.8	188.7	176.9	79.8	368.6	236.8	87.7	508.6	260.5
150	190	212	69.5	188.7	176.9	86.8	368.6	257.2	63.7	508.6	238.4
200	230	260	133.9	368.6	345.6	89.3	368.6	263.4	98.2	508.6	289.8
250	295	325	112.9	368.6	331.6	124.2	508.6	364.7	135.5	636.9	397.9
300	340	370	129.2	368.6	345.6	106.6	508.6	311.8	116.3	636.9	340.1
350	380	415	172.4	508.6	476.8	129.3	508.6	376.7	176.3	1277.4	598.8
400	440	475	148.7	508.6	431.3	162.2	636.9	470.5	202.8	1277.4	646.8
450	483	523	175.2	508.6	476.8	152.9	636.9	441.6	191.1	1277.4	621.2
500	535	575	154.6	508.6	444.3	168.6	636.9	484.7	210.8	1277.4	735.1
550	585	625	183.7	636.9	525.8	229.6	1277.4	657.2	275.5	2246.3	1052.9
600	635	675	198.8	636.9	566.5	207.0	1277.4	598.8	248.5	2246.3	1052.9
650	682	727	189.3	636.9	537.1	236.6	1277.4	671.4			
700	732	777	202.6	636.9	572.4	253.3	1277.4	715.5			
750	787	832	271.6	1277.4	763.9	271.6	1277.4	763.9			
800	837	882	288.3	1277.4	807.1	247.1	1277.4	691.8			
850	889	934	305.6	1277.4	851.8	261.9	1277.4	730.1			
900	937	987	340.4	1277.4	944.7	291.8	1277.4	809.7			
1000	1042	1092	323.4	1277.4	889.3	388.1	2246.3	1067.2			
1100	1142	1192	353.5	1277.4	963.3	424.2	2246.3	1224.0			
1200	1237	1292	351.8	1277.4	949.9	422.2	2246.3	1242.5			
1350	1387	1442	393.3	1277.4	1047.0	489.4	3611.7	1693.0			
1500	1537	1592	386.4	1277.4	1014.3	486.9	3611.7	1693.0			

Beneficiary: AIGI Industrial Group Ltd.

Acct. #: 7655 3888 0000 00866

Beneficiary Bank: China Everbright Bank, Nanjing Br. (SWIFT BIC: EVERCNBJJ1)

Intermediary Bank: Dresdner Bank AG Frankfurt AM Main DE (SWIFT BIC: DRESDEFF)



A	D1 (mm)	D2 (mm)	20K			30K		
			Minimum Torque (N.m)	Maximum Torque (N.m)	Preferred Torque (N.m)	Minimum Torque (N.m)	Maximum Torque (N.m)	Preferred Torque (N.m)
10	28	38	7.8	74.4	34.9	10.4	188.7	88.5
15	32	42	8.7	74.4	34.9	11.6	188.7	88.5
20	38	50	12.4	74.4	37.3	16.6	188.7	88.5
25	45	60	24.7	188.7	88.5	24.7	188.7	88.5
32	55	70	29.5	188.7	88.5	29.5	188.7	88.5
40	60	75	31.8	188.7	95.1	39.8	368.6	172.8
50	70	90	25.1	188.7	88.5	25.1	188.7	88.5
65	90	110	31.4	188.7	93.7	39.3	368.6	172.8
80	100	120	43.2	368.6	172.8	43.2	368.6	172.8
90	110	130	47.1	368.6	172.8	51.8	508.6	238.4
100	125	145	53.0	368.6	172.8	58.3	508.6	238.4
125	150	175	87.7	508.6	260.5	87.7	508.6	305.6
150	190	212	63.7	508.6	238.4	69.5	636.9	298.6
200	230	260	98.2	508.6	289.8	107.2	636.9	447.6
250	295	325	135.5	636.9	439.0	186.8	1277.4	823.2
300	340	370	116.3	636.9	412.9	176.4	1277.4	774.1
350	380	415	176.3	1277.4	641.3	220.2	1277.4	962.0
400	440	475	223.0	1277.4	814.5	337.0	2246.3	1466.2
450	483	523	215.1	1277.4	782.3			
500	535	575	255.7	1277.4	925.7			
550	585	625	357.5	2246.3	1288.7			
600	635	675	343.4	2246.3	1232.3			

Beneficiary: AIGI Industrial Group Ltd.

Acct. #: 7655 3888 0000 00866

Beneficiary Bank: China Everbright Bank, Nanjing Br. (SWIFT BIC: EVERCNBJN1)

Intermediary Bank: Dresdner Bank AG Frankfurt AM Main DE (SWIFT BIC: DRESDEFF)



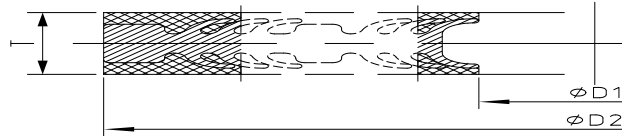
A	D1 (mm)	D2 (mm)	40K			63K		
			Minimum Torque (N.m)	Maximum Torque (N.m)	Preferred Torque (N.m)	Minimum Torque (N.m)	Maximum Torque (N.m)	Preferred Torque (N.m)
15	32	42	11.6	188.7	88.5	13.8	188.7	88.5
20	38	50	16.6	188.7	88.5	24.4	368.6	172.8
25	45	60	24.7	188.7	88.5	35.7	368.6	172.8
32	55	70	29.5	188.7	109.9	45.9	368.6	180.5
40	60	75	39.8	368.6	172.8	56.5	508.6	238.4
50	70	90	25.1	188.7	91.9	38.5	368.6	172.8
65	90	110	40.1	368.6	172.8	58.7	508.6	238.4
80	100	120	46.3	368.6	183.8	67.9	508.6	266.9
90	110	130	58.2	508.6	238.4	84.6	636.9	332.8
100	125	145	69.9	508.6	277.2	101.7	636.9	399.9
125	150	175	112.3	636.9	444.4	187.1	1277.4	736.1
150	190	212	125.2	1277.4	598.8	166.9	1277.4	656.7
200	230	260	189.7	1277.4	746.0	252.9	1277.4	994.7
250	295	325	280.2	1277.4	1097.6	448.4	2246.3	1763.9
300	340	370	317.6	2246.3	1238.6	423.4	2246.3	1665.7
350	380	415	396.4	2246.3	1539.2	616.6	3611.7	2425.5
400	440	475	505.6	2246.3	1954.9	786.4	3611.7	3093.7

Beneficiary: AIGI Industrial Group Ltd.

Acct. #: 7655 3888 0000 00866

Beneficiary Bank: China Everbright Bank, Nanjing Br. (SWIFT BIC: EVERCNBJNJ1)

Intermediary Bank: Dresdner Bank AG Frankfurt AM Main DE (SWIFT BIC: DRESDEFF)



TYPE I (Basic Construction) for MFM (Male-Female) Flanges

A	D1 (mm)	D2 (mm)	5K			10K			D1 (mm)	D2 (mm)	16K		
			Minimum Torque (N.m)	Maximum Torque (N.m)	Preferred Torque (N.m)	Minimum Torque (N.m)	Maximum Torque (N.m)	Preferred Torque (N.m)			Minimum Torque (N.m)	Maximum Torque (N.m)	Preferred Torque (N.m)
10	26	38	7.5	42.5	22.6	9.0	74.4	34.9	26	38	9.0	74.4	34.9
15	30	42	8.5	42.5	25.4	10.2	74.4	34.9	30	42	10.2	74.4	34.9
20	38	50	10.4	42.5	31.0	12.4	74.4	37.3	36	50	14.2	74.4	42.5
25	46	60	14.6	42.5	39.8	23.3	188.7	88.5	46	60	23.3	188.7	88.5
32	54	70	23.4	74.4	69.8	31.2	188.7	93.2	54	70	31.2	188.7	93.2
40	57	75	28.0	74.4	69.8	37.3	188.7	111.6	55	75	40.8	188.7	122.1
50	70	90	37.7	74.4	69.8	50.3	188.7	150.2	66	90	29.4	188.7	88.5
65	90	110	47.1	74.4	69.8	62.8	188.7	176.9	86	110	36.9	188.7	110.2
80	100	120	69.1	188.7	176.9	34.6	188.7	103.0	96	120	50.9	368.6	172.8
90	110	130	75.4	188.7	176.9	37.7	188.7	112.2	105	130	57.7	368.6	172.8
100	123	145	46.3	188.7	137.8	46.3	188.7	137.8	120	145	65.0	368.6	193.5
125	153	175	56.7	188.7	168.3	70.8	368.6	210.3	150	175	87.7	508.6	260.5
150	190	212	69.5	188.7	176.9	86.8	368.6	257.2	182	212	79.1	508.6	238.4
200	235	260	121.5	368.6	345.6	81.0	368.6	238.9	230	260	98.2	508.6	289.8
250	295	325	112.9	368.6	331.6	124.2	508.6	364.7	289	325	147.8	636.9	434.0
300	340	370	129.2	368.6	345.6	106.6	508.6	311.8	334	370	126.9	636.9	371.2
350	385	415	160.1	508.6	466.2	120.1	508.6	349.7	379	415	178.8	1277.4	598.8
400	440	475	148.7	508.6	431.3	162.2	636.9	470.5	435	475	216.3	1277.4	655.2
450	488	523	164.2	508.6	474.2	143.3	636.9	413.9	483	523	191.1	1277.4	621.2
500	535	575	154.6	508.6	444.3	168.6	636.9	484.7	530	575	223.1	1277.4	742.8
550	585	625	183.7	636.9	525.8	229.6	1277.4	657.2	580	625	291.8	2246.3	1052.9
600	635	675	198.8	636.9	566.5	207.0	1277.4	598.8	630	675	263.1	2246.3	1052.9
650	682	727	189.3	636.9	537.1	236.6	1277.4	671.4					
700	732	777	202.6	636.9	572.4	253.3	1277.4	715.5					
750	787	832	271.6	1277.4	763.9	271.6	1277.4	763.9					
800	832	882	303.5	1277.4	849.9	260.2	1277.4	728.5					
850	884	934	321.8	1277.4	897.0	275.8	1277.4	768.9					
900	937	987	340.4	1277.4	944.7	291.8	1277.4	809.7					
1000	1037	1092	338.9	1277.4	932.0	406.7	2246.3	1118.4					
1100	1137	1192	370.5	1277.4	1009.6	444.6	2246.3	1230.2					
1200	1237	1292	351.8	1277.4	949.9	422.2	2246.3	1242.5					
1350	1382	1442	410.5	1277.4	1092.9	510.8	3611.7	1693.0					
1500	1532	1592	403.4	1277.4	1058.8	508.2	3611.7	1693.0					

Beneficiary: AIGI Industrial Group Ltd.

Acct. #: 7655 3888 0000 00866

Beneficiary Bank: China Everbright Bank, Nanjing Br. (SWIFT BIC: EVERCNBJNJ1)

Intermediary Bank: Dresdner Bank AG Frankfurt AM Main DE (SWIFT BIC: DRESDEFF)



A	20K					30K				
	D1 (mm)	D2 (mm)	Minimum Torque (N.m)	Maximum Torque (N.m)	Preferred Torque (N.m)	D1 (mm)	D2 (mm)	Minimum Torque (N.m)	Maximum Torque (N.m)	Preferred Torque (N.m)
10	26	38	7.8	74.4	34.9	22	38	15.1	188.7	88.5
15	30	42	8.7	74.4	34.9	25	42	17.9	188.7	88.5
20	36	50	12.4	74.4	42.5	32	50	23.2	188.7	88.5
25	46	60	24.7	188.7	88.5	41	60	30.1	188.7	90.2
32	54	70	29.5	188.7	93.2	51	70	36.1	188.7	108.0
40	55	75	31.8	188.7	122.1	52	75	57.4	368.6	172.8
50	66	90	25.1	188.7	88.5	65	90	30.4	188.7	90.9
65	86	110	31.4	188.7	110.2	85	110	47.9	368.6	172.8
80	96	120	43.2	368.6	172.8	95	120	52.8	368.6	172.8
90	105	130	47.1	368.6	172.8	105	130	63.4	508.6	238.4
100	120	145	53.0	368.6	193.5	120	145	71.5	508.6	238.4
125	150	175	87.7	508.6	260.5	145	175	96.5	508.6	315.9
150	182	212	63.7	508.6	238.4	177	212	92.6	636.9	324.3
200	230	260	98.2	508.6	289.8	224	260	116.8	636.9	458.9
250	289	325	135.5	636.9	448.7	285	325	194.2	1277.4	852.6
300	334	370	116.3	636.9	421.2	325	370	184.8	1277.4	810.8
350	379	415	176.3	1277.4	643.2	370	415	226.3	1277.4	988.6
400	435	475	223.0	1277.4	825.1	430	475	345.5	2246.3	1503.0
450	483	523	215.1	1277.4	782.3					
500	530	575	255.7	1277.4	935.3					
550	580	625	357.5	2246.3	1301.3					
600	630	675	343.4	2246.3	1243.6					

Beneficiary: AIGI Industrial Group Ltd.

Acct. #: 7655 3888 0000 00866

Beneficiary Bank: China Everbright Bank, Nanjing Br. (SWIFT BIC: EVERCNBJNJ1)

Intermediary Bank: Dresdner Bank AG Frankfurt AM Main DE (SWIFT BIC: DRESDEFF)



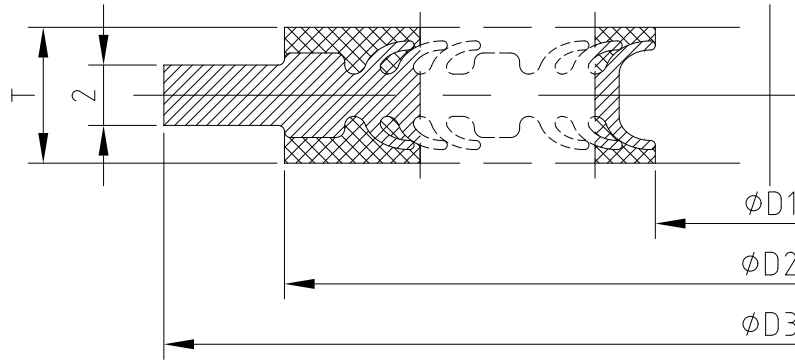
A	40K					63K				
	D1 (mm)	D2 (mm)	Minimum Torque (N.m)	Maximum Torque (N.m)	Preferred Torque (N.m)	D1 (mm)	D2 (mm)	Minimum Torque (N.m)	Maximum Torque (N.m)	Preferred Torque (N.m)
15	25	42	17.9	188.7	88.5	25	42	17.9	188.7	88.5
20	32	50	23.2	188.7	88.5	32	50	29.0	368.6	172.8
25	41	60	30.1	188.7	94.0	41	60	39.2	368.6	172.8
32	51	70	36.1	188.7	120.3	51	70	50.2	368.6	197.7
40	52	75	57.4	368.6	181.0	52	75	66.6	508.6	261.9
50	65	90	30.4	188.7	100.2	65	90	41.9	368.6	172.8
65	85	110	47.9	368.6	172.8	85	110	63.7	508.6	250.7
80	95	120	52.8	368.6	198.9	95	120	73.4	508.6	288.8
90	105	130	63.4	508.6	249.2	105	130	91.3	636.9	359.2
100	120	145	75.2	508.6	298.2	120	145	109.3	636.9	430.1
125	145	175	116.1	636.9	459.5	145	175	193.5	1277.4	761.0
150	177	212	136.8	1277.4	598.8	177	212	182.4	1277.4	717.6
200	224	260	194.5	1277.4	764.9	224	260	259.3	1277.4	1020.0
250	285	325	290.2	1277.4	1136.8	285	325	464.4	2246.3	1826.9
300	325	370	332.6	2246.3	1297.3	325	370	443.5	2246.3	1744.7
350	370	415	407.3	2246.3	1581.8	370	415	633.6	3611.7	2492.5
400	430	475	518.3	2246.3	2003.9	430	475	806.2	3611.7	3171.4

Beneficiary: AIGI Industrial Group Ltd.

Acct. #: 7655 3888 0000 00866

Beneficiary Bank: China Everbright Bank, Nanjing Br. (SWIFT BIC: EVERCNBJN1)

Intermediary Bank: Dresdner Bank AG Frankfurt AM Main DE (SWIFT BIC: DRESDEFF)



TYPE II (With Centering Ring Construction) for FF (Flat Face) & RF (Raised Face) Flanges

A	2K						5K					
	D1 (mm)	D2 (mm)	D3 (mm)	Minimum Torque (N.m)	Maximum Torque (N.m)	Preferred Torque (N.m)	D1 (mm)	D2 (mm)	D3 (mm)	Minimum Torque (N.m)	Maximum Torque (N.m)	Preferred Torque (N.m)
10							25	37	44	7.3	42.5	21.9
15							29	41	49	8.2	42.5	24.7
20							35	47	54	9.7	42.5	28.9
25							40	54	64	12.9	42.5	38.7
32							51	67	76	22.2	74.4	66.5
40							57	73	81	24.5	74.4	69.8
50							64	84	91	34.9	74.4	69.8
65							87	107	116	45.7	74.4	69.8
80							98	118	127	67.9	188.7	176.9
90							110	130	137	75.4	188.7	176.9
100							118	140	147	44.6	188.7	132.6
125							150	172	182	55.6	188.7	165.2
150							180	202	212	66.0	188.7	176.9
175							205	230	238	106.8	368.6	315.6
200							225	250	258	116.6	368.6	343.9
225							250	275	283	85.9	368.6	252.9
250							280	310	323	107.4	368.6	315.6
300							320	350	368	121.9	368.6	345.6
350							370	400	411	154.1	508.6	448.8
400							425	460	471	143.9	508.6	417.2
450	480	515	533	147.0	368.6	345.6	480	515	531	161.6	508.6	466.8
500	530	570	583	139.2	368.6	345.6	530	570	581	153.2	508.6	440.4
550	580	620	641	167.0	508.6	476.8	580	620	639	182.2	636.9	521.5
600	630	670	691	180.8	508.6	476.8	630	670	689	197.3	636.9	562.2
650	680	725	746	173.0	508.6	476.8	680	725	744	188.8	636.9	535.6
700	730	775	796	185.2	508.6	476.8	730	775	794	202.1	636.9	570.9
750	780	825	854	215.4	636.9	597.1	780	825	848	269.3	1277.4	757.3
800	830	880	904	242.3	636.9	597.1	830	880	898	302.8	1277.4	847.9
850	880	930	954	256.3	636.9	597.1	880	930	948	320.4	1277.4	893.1
900	930	980	1004	270.4	636.9	597.1	930	980	998	338.0	1277.4	937.8
1000	1030	1085	1104	269.4	636.9	597.1	1030	1085	1098	336.7	1277.4	925.9

Beneficiary: AIGI Industrial Group Ltd.

Acct. #: 7655 3888 0000 00866

Beneficiary Bank: China Everbright Bank, Nanjing Br. (SWIFT BIC: EVERCNBJNJ1)

Intermediary Bank: Dresdner Bank AG Frankfurt AM Main DE (SWIFT BIC: DRESDEFF)



1100	1135	1190	1214	295.9	636.9	597.1	1135	1190	1208	369.9	1277.4	1007.9
1200	1235	1290	1324	281.0	636.9	597.1	1235	1290	1318	351.3	1277.4	948.4
1350	1390	1455	1479	344.7	636.9	597.1	1390	1455	1473	430.9	1277.4	1147.3
1500	1540	1610	1634	352.2	636.9	597.1	1540	1610	1628	440.2	1277.4	1155.6

Beneficiary: AIGI Industrial Group Ltd.

Acct. #: 7655 3888 0000 00866

Beneficiary Bank: China Everbright Bank, Nanjing Br. (SWIFT BIC: EVERCNBJNJ1)

Intermediary Bank: Dresdner Bank AG Frankfurt AM Main DE (SWIFT BIC: DRESDEFF)



A	10K						16K					
	D1 (mm)	D2 (mm)	D3 (mm)	Minimum Torque (N.m)	Maximum Torque (N.m)	Preferred Torque (N.m)	D1 (mm)	D2 (mm)	D3 (mm)	Minimum Torque (N.m)	Maximum Torque (N.m)	Preferred Torque (N.m)
10	25	37	51	8.8	74.4	34.9	25	37	51	8.8	74.4	34.9
15	29	41	56	9.9	74.4	34.9	29	41	56	9.9	74.4	34.9
20	35	47	61	11.6	74.4	34.9	35	49	61	13.9	74.4	41.5
25	40	54	72	20.7	188.7	88.5	40	54	72	20.7	188.7	88.5
32	51	67	82	29.7	188.7	88.7	51	67	82	29.7	188.7	88.7
40	57	73	87	32.7	188.7	97.7	57	77	87	42.1	188.7	125.9
50	64	84	102	46.5	188.7	138.9	64	88	102	28.7	188.7	88.5
65	87	107	122	60.9	188.7	176.9	87	111	122	37.3	188.7	111.4
80	98	118	132	33.9	188.7	101.1	98	122	138	51.8	368.6	172.8
90	110	130	142	37.7	188.7	112.2	110	135	148	60.1	368.6	179.0
100	118	140	157	44.6	188.7	132.6	118	143	163	64.1	368.6	190.6
125	150	172	188	69.5	368.6	206.5	150	175	201	87.7	508.6	260.5
150	180	202	218	82.5	368.6	244.4	180	210	236	78.3	508.6	238.4
175	205	230	243	71.2	368.6	210.4						
200	225	250	268	77.7	368.6	229.3	225	255	281	96.2	508.6	283.9
225	250	275	288	85.9	368.6	252.9						
250	280	310	331	118.2	508.6	347.2	280	316	354	143.5	636.9	421.4
300	320	350	376	100.6	508.6	294.3	320	356	404	121.9	636.9	356.6
350	370	400	421	115.6	508.6	336.6	370	406	448	174.7	1277.4	598.8
400	425	460	484	156.9	636.9	455.2	425	465	508	211.6	1277.4	630.6
450	480	515	539	141.1	636.9	407.4	480	520	573	190.0	1277.4	614.8
500	530	570	594	167.1	636.9	480.4	530	575	628	223.1	1277.4	742.8
550	580	620	648	227.7	1277.4	651.8	580	625	682	291.8	2246.3	1052.9
600	630	670	698	205.5	1277.4	598.8	630	675	732	263.1	2246.3	1052.9
650	680	725	748	235.9	1277.4	669.5						
700	730	775	808	252.6	1277.4	713.6						
750	780	825	868	269.3	1277.4	757.3						
800	830	880	918	259.6	1277.4	726.8						
850	880	930	968	274.6	1277.4	765.5						
900	930	980	1018	289.7	1277.4	803.9						
1000	1030	1085	1122	404.0	2246.3	1111.1						
1100	1135	1190	1232	443.8	2246.3	1226.3						
1200	1235	1290	1342	421.5	2246.3	1238.8						
1350	1390	1455	1496	536.3	3611.7	1693.0						
1500	1540	1610	1656	554.7	3611.7	1734.0						

Beneficiary: AIGI Industrial Group Ltd.

Acct. #: 7655 3888 0000 00866

Beneficiary Bank: China Everbright Bank, Nanjing Br. (SWIFT BIC: EVERCNBJNJ1)

Intermediary Bank: Dresdner Bank AG Frankfurt AM Main DE (SWIFT BIC: DRESDEFF)



A	20K						30K					
	D1 (mm)	D2 (mm)	D3 (mm)	Minimum Torque (N.m)	Maximum Torque (N.m)	Preferred Torque (N.m)	D1 (mm)	D2 (mm)	D3 (mm)	Minimum Torque (N.m)	Maximum Torque (N.m)	Preferred Torque (N.m)
10	25	37	51	8.8	74.4	34.9	25	40	57	15.3	188.7	88.5
15	29	41	56	9.9	74.4	34.9	29	45	62	18.6	188.7	88.5
20	35	49	61	13.9	74.4	41.5	35	52	67	23.2	188.7	88.5
25	40	54	72	20.7	188.7	88.5	40	58	77	27.7	188.7	88.5
32	51	67	82	29.7	188.7	88.7	51	70	87	36.1	188.7	108.0
40	57	77	87	42.1	188.7	125.9	57	80	98	61.9	368.6	185.0
50	64	88	102	28.7	188.7	88.5	64	91	112	32.2	188.7	96.1
65	87	111	122	37.3	188.7	111.4	87	114	138	52.1	368.6	172.8
80	98	122	138	51.8	368.6	172.8	98	125	148	57.7	368.6	172.8
90	110	135	148	60.1	368.6	179.0	110	140	161	75.5	508.6	238.4
100	118	143	163	64.1	368.6	190.6	118	148	171	80.3	508.6	239.8
125	150	175	201	87.7	508.6	260.5	150	180	206	99.5	508.6	331.1
150	180	210	236	78.3	508.6	238.4	180	215	249	94.1	636.9	332.0
200	225	255	281	96.2	508.6	283.9	225	261	294	117.2	636.9	462.0
250	280	316	354	143.5	636.9	427.2	280	320	358	191.0	1277.4	829.9
300	320	356	404	121.9	636.9	393.4	320	365	418	180.4	1277.4	791.7
350	370	406	448	174.7	1277.4	618.5	370	415	463	226.3	1277.4	988.6
400	425	465	508	217.4	1277.4	794.1	425	470	522	339.0	2246.3	1474.7
450	480	520	573	212.9	1277.4	774.1						
500	530	575	628	258.4	1277.4	935.3						
550	580	625	682	361.0	2246.3	1301.3						
600	630	675	732	346.5	2246.3	1243.6						

Beneficiary: AIGI Industrial Group Ltd.

Acct. #: 7655 3888 0000 00866

Beneficiary Bank: China Everbright Bank, Nanjing Br. (SWIFT BIC: EVERCNBJNJ1)

Intermediary Bank: Dresdner Bank AG Frankfurt AM Main DE (SWIFT BIC: DRESDEFF)



A	40K						63K					
	D1 (mm)	D2 (mm)	D3 (mm)	Minimum Torque (N.m)	Maximum Torque (N.m)	Preferred Torque (N.m)	D1 (mm)	D2 (mm)	D3 (mm)	Minimum Torque (N.m)	Maximum Torque (N.m)	Preferred Torque (N.m)
15	29	45	62	18.6	188.7	88.5	29	45	67	18.6	188.7	88.5
20	35	52	67	23.2	188.7	88.5	35	52	73	29.9	368.6	172.8
25	40	58	77	27.7	188.7	88.5	40	58	78	36.4	368.6	172.8
32	51	70	87	36.1	188.7	120.3	51	70	88	50.2	368.6	197.7
40	57	80	98	61.9	368.6	200.7	57	80	106	73.8	508.6	290.5
50	64	91	112	32.2	188.7	104.0	64	91	123	43.5	368.6	172.8
65	87	114	138	52.1	368.6	186.7	87	114	151	68.8	508.6	270.7
80	98	125	148	57.7	368.6	216.6	98	125	161	79.9	508.6	314.5
90	110	140	161	75.5	508.6	292.0	110	140	179	107.0	636.9	420.9
100	118	148	181	80.6	508.6	319.7	118	148	194	117.2	636.9	461.2
125	150	180	224	121.7	636.9	481.6	150	180	233	202.8	1277.4	797.7
150	180	215	263	140.1	1277.4	598.8	180	215	273	186.8	1277.4	734.8
200	225	261	313	195.8	1277.4	770.0	225	261	328	261.0	1277.4	1026.8
250	280	320	378	282.5	1277.4	1106.5	280	320	392	452.0	2246.3	1778.1
300	320	365	432	324.8	2246.3	1266.7	320	365	447	433.1	2246.3	1703.6
350	370	415	477	407.3	2246.3	1581.8	370	415	486	633.6	3611.7	2492.5
400	425	470	532	508.5	2246.3	1966.3	425	470	546	791.0	3611.7	3111.8

Maximum Torque based on Class 8.8 bolts.

Preferred Torque based on the maximum working pressure of JIS flanges.



Applicable standards

PN Series	Class Series	JIS Series	BS10 Series
EN 1092	ASME B16.5	JIS B2220	BS 10
EN 1514	ASME B16.47	JIS B2404	
BS 4504	ASME B16.20		
BS 4865	ASME B 16.21		
DIN	EN 1759		
	EN 12560		
	BS 1560		
	BS 3381		
	JPI-7S-15		
	JPI-7S-41		
	JPI-7S-43		
	MSS SP-44 (A series)		
	API 605 (B series)		

Beneficiary: AIGI Industrial Group Ltd. Acct. #: 7655 3888 0000 00866

Beneficiary Bank: China Everbright Bank, Nanjing Br. (SWIFT BIC: EVERCNBJNJ1) Intermediary Bank: Dresdner Bank AG Frankfurt AM Main DE (SWIFT BIC: DRESDEFF)